



Insight into the 2024 ICD-10 PCS Updates

Mikki Fazio, RHIT, CCS, Principal Content Integrity Consultant

Disclaimer Statement

This presentation was current at the time it was published or provided via the web and is designed to provide accurate and authoritative information regarding the subject matter covered. The information provided is only intended to be a general overview with the understanding that neither the presenter nor the event sponsor is engaged in rendering specific coding advice. It is not intended to take the place of either the written policies or regulations. We encourage participants to review the specific regulations and other interpretive materials, as necessary.

All CPT® codes are trademarked by the American Medical Association (AMA) and all revenue codes are copyrighted by the American Hospital Association (AHA).

Agenda

- ICD-10-PCS
 - Code Additions
 - Code Deletions
 - Code Revisions
- ICD-10-PCS Guideline Changes

PCS Code Changes Summary

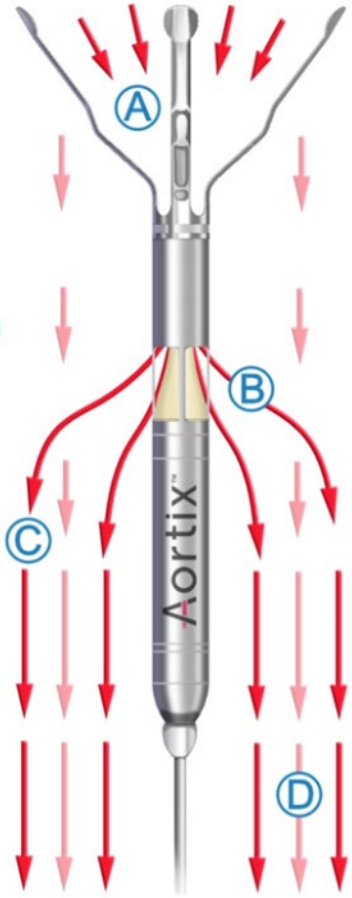
| 2023 Total | New Codes | Revised Titles | Deleted Codes | 2024 Total |
|------------|-----------|----------------|---------------|---------------|
| 78,530 | 78 | 14 | 5 | 78,603 |

| | |
|---|---------------|
| Medical and Surgical | 68,058 |
| Obstetrics | 304 |
| Placement | 861 |
| Administration | 1,271 |
| Measurement and Monitoring | 422 |
| Extracorporeal or Systemic Assistance and Performance | 54 |
| Extracorporeal or Systemic Therapies | 46 |
| Osteopathic | 100 |
| Other Procedures | 88 |
| Chiropractic | 90 |
| Imaging | 2,978 |
| Nuclear Medicine | 463 |
| Radiation Therapy | 2,056 |
| Physical Rehabilitation and Diagnostic Audiology | 1,380 |
| Mental Health | 30 |
| Substance Abuse Treatment | 59 |
| New Technology | 343 |
| Total | 78,603 |

ICD-10-PCS Code Additions, Deletions, and Revisions

ICD-10-PCS Additions, Deletions, and Revisions

Aortix™ System from Procyrion



A

A portion of the native flow enters the pump at the inlet

B

The flow is accelerated in the pump and exits the device in high velocity jets directed downstream

C

The high velocity jets entrain the native flow, transferring momentum and energy to it

D

The result is a net increase in overall velocity and aortic flow

ICD-10-PCS Additions, Deletions, and Revisions

02H- Medical and Surgical/Heart and Great Vessels/Insertion

02HW3RZ Insertion of Short-term External Heart Assist System into Thoracic Aorta, Descending, Percutaneous Approach

| | | | |
|-------------------------------------|---|--|-----------------------|
| <i>Section</i> | 0 Medical and Surgical | | |
| <i>Body System</i> | 2 Heart and Great Vessels | | |
| <i>Operation</i> | H Insertion: Putting in a nonbiological appliance that monitors, assists, performs, or prevents a physiological function but does not physically take the place of a body part | | |
| <i>Body Part</i> | <i>Approach</i> | <i>Device</i> | <i>Qualifier</i> |
| W Thoracic Aorta, Descending | 3 Percutaneous | 0 Monitoring Device, Pressure Sensor 2 Monitoring Device 3 Infusion Device D Intraluminal Device R Short-term External Heart Assist System Y Other Device | Z No Qualifier |

Code Assistance separately using code 5A0221D, Assistance with Cardiac Output Using Impeller Pump, Continuous

ICD-10-PCS Additions, Deletions, and Revisions

02P- Medical and Surgical/Heart and Great Vessels/Removal

02PW3RZ Removal of Short-term External Heart Assist System from Thoracic Aorta, Descending, Percutaneous Approach

| | | | | |
|-------------------------------------|----------|--|--|-----------------------|
| <i>Section</i> | 0 | Medical and Surgical | | |
| <i>Body System</i> | 2 | Heart and Great Vessels | | |
| <i>Operation</i> | P | Removal: Taking out or off a device from a body part | | |
| <i>Body Part</i> | | <i>Approach</i> | <i>Device</i> | <i>Qualifier</i> |
| W Thoracic Aorta, Descending | | 3 Percutaneous | R Short-term External Heart Assist System | Z No Qualifier |

ICD-10-PCS Additions, Deletions, and Revisions

02W- Medical and Surgical/Heart and Great Vessels/Revision

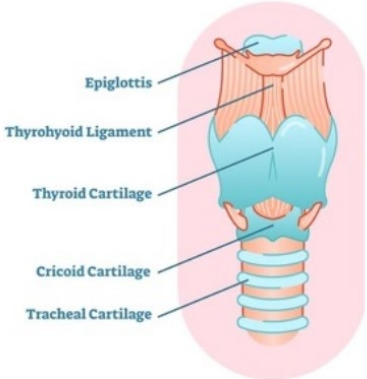
02WW3RZ Revision of Short-term External Heart Assist System in Thoracic Aorta, Descending, Percutaneous Approach

| | | | | |
|-------------------------------------|----------|--|--|-----------------------|
| <i>Section</i> | 0 | Medical and Surgical | | |
| <i>Body System</i> | 2 | Heart and Great Vessels | | |
| <i>Operation</i> | W | Revision: Correcting, to the extent possible, a portion of a malfunctioning device or the position of a displaced device | | |
| <i>Body Part</i> | | <i>Approach</i> | <i>Device</i> | <i>Qualifier</i> |
| W Thoracic Aorta, Descending | | 3 Percutaneous | R Short-term External Heart Assist System | Z No Qualifier |

ICD-10-PCS Additions, Deletions, and Revisions

0CS- Medical and Surgical/ Mouth and Throat/Reposition

- 0CSS0ZZ Reposition Larynx, Open Approach
- 0CSS7ZZ Reposition Larynx, Via Natural or Artificial Opening
- 0CSS7ZZ Reposition Larynx, Via Natural or Artificial Opening
- 0CSS8ZZ Reposition Larynx, Via Natural or Artificial Opening Endoscopic



| | | | | |
|----------------------------|----------|--|--------------------|-----------------------|
| <i>Section</i> | 0 | Medical and Surgical | | |
| <i>Body System</i> | C | Mouth and Throat | | |
| <i>Operation</i> | S | Reposition: Moving to its normal location, or other suitable location, all or a portion of a body part | | |
| <i>Body Part</i> | | <i>Approach</i> | <i>Device</i> | <i>Qualifier</i> |
| R Epiglottis | | 0 Open | Z No Device | Z No Qualifier |
| S Larynx | | 7 Via Natural or Artificial | | |
| T Vocal Cord, Right | | Opening | | |
| V Vocal Cord, Left | | 8 Via Natural or Artificial | | |
| | | Opening Endoscopic | | |

ICD-10-PCS Additions, Deletions, and Revisions

0DH- Medical and Surgical/Gastrointestinal System/Insertion

0DH17JZ Insertion of Magnetic Lengthening Device into Upper Esophagus, Via Natural or Artificial Opening

0DH27JZ Insertion of Magnetic Lengthening Device into Middle Esophagus, Via Natural or Artificial Opening

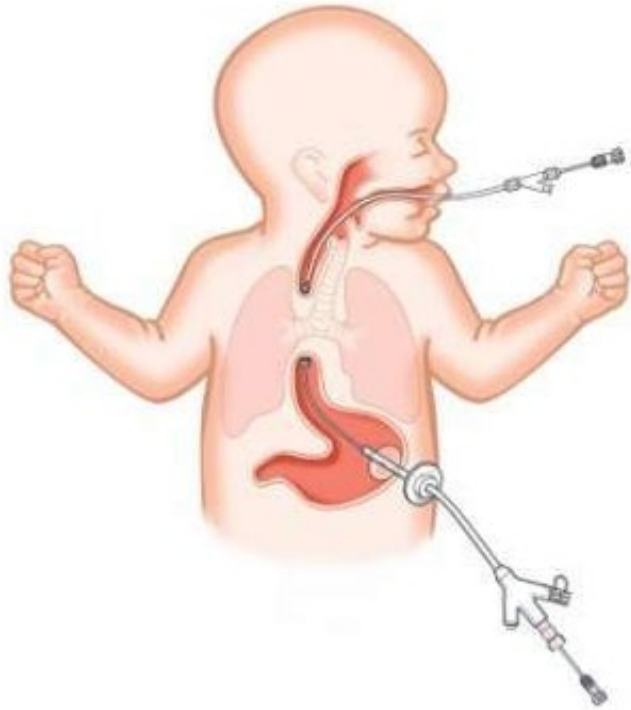
0DH37JZ Insertion of Magnetic Lengthening Device into Lower Esophagus, Via Natural or Artificial Opening

- Flourish® Pediatric Esophageal Atresia Device by Cook Medical

| | | | | |
|---|----------|--|-------------------------------|------------------|
| <i>Section</i> | 0 | Medical and Surgical | | |
| <i>Body System</i> | D | Gastrointestinal System | | |
| <i>Operation</i> | H | Insertion: Putting in a nonbiological appliance that monitors, assists, performs, or prevents a physiological function but does not physically take the place of a body part | | |
| <i>Body Part</i> | | <i>Approach</i> | <i>Device</i> | <i>Qualifier</i> |
| 1 Esophagus, Upper 2 Esophagus, Middle 3 Esophagus, Lower | | 7 Via Natural or Artificial Opening | J Magnetic Lengthening Device | Z No Qualifier |

ICD-10-PCS Additions, Deletions, and Revisions

0DH- Medical and Surgical/Gastrointestinal System/Insertion



Rare earth magnets are inserted into the upper and lower ends of the infant's esophagus.

The magnets gradually stretch both ends of the esophagus over the course of several days.

The tissue connects to form an intact esophagus.

ICD-10-PCS Additions, Deletions, and Revisions

0WH- Medical and Surgical/General Anatomical Regions/Insertion

- 0WHC0GZ Insertion of Defibrillator Lead into Mediastinum, Open Approach
- 0WHC3GZ Insertion of Defibrillator Lead into Mediastinum, Percutaneous Approach
- 0WHC4GZ Insertion of Defibrillator Lead into Mediastinum, Percutaneous Endoscopic Approach

| | | | |
|----------------------|---|--|-----------------------|
| <i>Section</i> | 0 Medical and Surgical | | |
| <i>Body System</i> | W Anatomical Regions, General | | |
| <i>Operation</i> | H Insertion: Putting in a nonbiological appliance that monitors, assists, performs, or prevents a physiological function but does not physically take the place of a body part | | |
| <i>Body Part</i> | <i>Approach</i> | <i>Device</i> | <i>Qualifier</i> |
| C Mediastinum | 0 Open 3 Percutaneous 4 Percutaneous Endoscopic | 1 Radioactive Element 3 Infusion Device G Defibrillator Lead Y Other Device | Z No Qualifier |

- Insertion of the generator is coded separately as 0JH608Z
- Extravascular Implantable Defibrillator Lead (EV-ICD)

ICD-10-PCS Additions, Deletions, and Revisions

Extravascular Implantable Defibrillator Lead (EV-ICD)

| Transvenous Defibrillator | Subcutaneous Defibrillator | Extravascular Defibrillator |
|---|---|---|
| Not available when veins are unsuitable (occluded) | Available when veins are unsuitable | Available when veins are unsuitable |
| Vascular access is susceptible to complications (infection) | Avoids complications with transvenous leads | Avoids complications with transvenous leads |
| Provides pacing and shock therapies | Shocks, but does not provide antitachycardia pacing | Shocks and performs antitachycardia pacing |

ICD-10-PCS Additions, Deletions, and Revisions

0WP- Medical and Surgical/General Anatomical Regions/Removal

- 0WPC0GZ Removal of Defibrillator Lead from Mediastinum, Open Approach
- 0WPC3GZ Removal of Defibrillator Lead from Mediastinum, Percutaneous Approach
- 0WPC4GZ Removal of Defibrillator Lead from Mediastinum, Percutaneous Endoscopic Approach
- 0WPCXGZ Removal of Defibrillator Lead from Mediastinum, External Approach

| | | | |
|----------------------|---|--|-----------------------|
| <i>Section</i> | 0 Medical and Surgical | | |
| <i>Body System</i> | W Anatomical Regions, General | | |
| <i>Operation</i> | P Removal: Taking out or off a device from a body part | | |
| <i>Body Part</i> | <i>Approach</i> | <i>Device</i> | <i>Qualifier</i> |
| C Mediastinum | 0 Open 3 Percutaneous 4 Percutaneous Endoscopic X External | 0 Drainage Device 1 Radioactive Element 3 Infusion Device 7 Autologous Tissue Substitute G Defibrillator Lead J Synthetic Substitute K Nonautologous Tissue Substitute Y Other Device | Z No Qualifier |

ICD-10-PCS Additions, Deletions, and Revisions

0WW- Medical and Surgical/General Anatomical Regions/Revision

0WWC0GZ Revision of Defibrillator Lead in Mediastinum, Open Approach

0WWC3GZ Revision of Defibrillator Lead in Mediastinum, Percutaneous Approach

0WWC4GZ Revision of Defibrillator Lead in Mediastinum, Percutaneous Endoscopic Approach

0WWCXGZ Revision of Defibrillator Lead in Mediastinum, External Approach

| | | | |
|----------------------|---|--|-----------------------|
| <i>Section</i> | 0 Medical and Surgical | | |
| <i>Body System</i> | W Anatomical Regions, General | | |
| <i>Operation</i> | W Revision: Correcting, to the extent possible, a portion of a malfunctioning device or the position of a displaced device | | |
| <i>Body Part</i> | <i>Approach</i> | <i>Device</i> | <i>Qualifier</i> |
| C Mediastinum | 0 Open 3 Percutaneous 4 Percutaneous Endoscopic X External | 0 Drainage Device 1 Radioactive Element 3 Infusion Device 7 Autologous Tissue Substitute G Defibrillator Lead J Synthetic Substitute K Nonautologous Tissue Substitute Y Other Device | Z No Qualifier |

ICD-10-PCS Additions, Deletions, and Revisions

5A0- Extracorporeal or Systemic Assistance and Performance/Physiological Systems/Assistance

5A09B5K Assistance with Respiratory Ventilation, Less than 8 Consecutive Hours, Intubated Prone Positioning

5A09C5K Assistance with Respiratory Ventilation, 8-24 Consecutive Hours, Intubated Prone Positioning

5A09D5K Assistance with Respiratory Ventilation, Greater than 24 Consecutive Hours, Intubated Prone Positioning

| | | | | |
|----------------------|----------|---|----------------------|--------------------------------------|
| <i>Section</i> | 5 | Extracorporeal or Systemic Assistance and Performance | | |
| <i>Body System</i> | A | Physiological Systems | | |
| <i>Operation</i> | 0 | Assistance: Taking over a portion of a physiological function by extracorporeal means | | |
| <i>Body System</i> | | <i>Duration</i> | <i>Function</i> | <i>Qualifier</i> |
| 9 Respiratory | | B Less than 8 Consecutive Hours C 8-24 Consecutive Hours D Greater than 24 Consecutive Hours | 5 Ventilation | K Intubated Prone Positioning |

- Assign prone positioning code only once per stay.
- Mechanical ventilation is coded separately.

ICD-10-PCS Additions, Deletions, and Revisions

8E0- Other Procedures/Physiological Systems and Anatomical Regions/Other Procedures

8E0U0EN Fluorescence Guided Procedure of Female Reproductive System using Pafolacianine, Open Approach

8E0U3EN Fluorescence Guided Procedure of Female Reproductive System using Pafolacianine, Percutaneous Approach

8E0U4EN Fluorescence Guided Procedure of Female Reproductive System using Pafolacianine, Percutaneous Endoscopic Approach

8E0U7EN Fluorescence Guided Procedure of Female Reproductive System using Pafolacianine, Via Natural or Artificial Opening

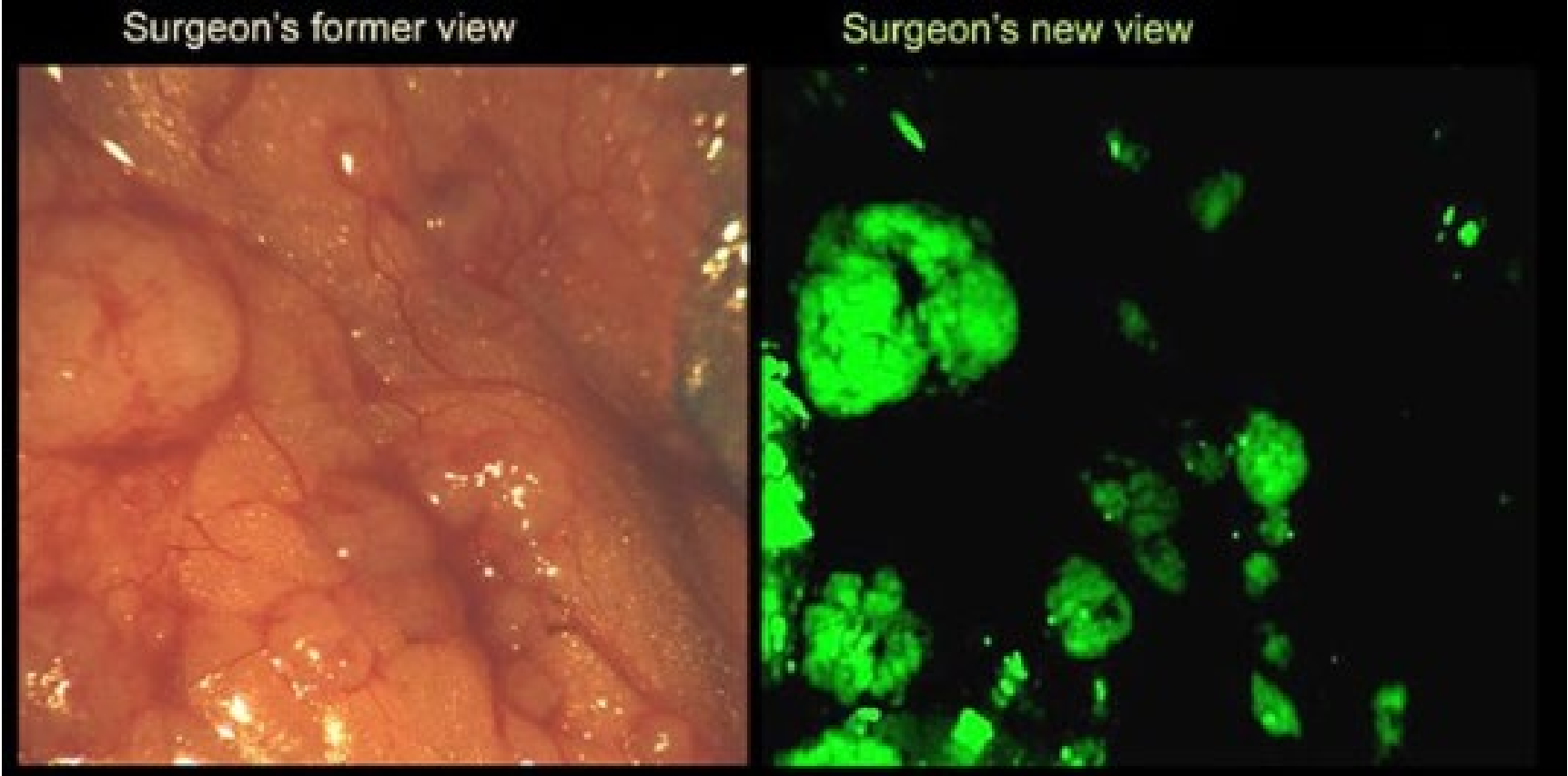
8E0U8EN Fluorescence Guided Procedure of Female Reproductive System using Pafolacianine, Via Natural or Artificial Opening Endoscopic

- CYTALUX® (Pafolacianine)

| | | | |
|-------------------------------------|---|--|------------------------|
| <i>Section</i> | 8 Other Procedures | | |
| <i>Body System</i> | E Physiological Systems and Anatomical Regions | | |
| <i>Operation</i> | 0 Other Procedures: Methodologies which attempt to remediate or cure a disorder or disease | | |
| <i>Body Region</i> | <i>Approach</i> | <i>Method</i> | <i>Qualifier</i> |
| U Female Reproductive System | 0 Open 3 Percutaneous 4 Percutaneous Endoscopic 7 Via Natural or Artificial Opening 8 Via Natural or Artificial Opening Endoscopic | E Fluorescence Guided Procedure | N Pafolacianine |

ICD-10-PCS Additions, Deletions, and Revisions

CYTALUX® (Pafolacianine)



ICD-10-PCS Additions, Deletions, and Revisions

8E0- Other Procedures/Physiological Systems and Anatomical Regions/Other Procedures

8E0W0EN Fluorescence Guided Procedure of Trunk Region using Pafolacianine, Open Approach

8E0W3EN Fluorescence Guided Procedure of Trunk Region using Pafolacianine, Percutaneous Approach

8E0W4EN Fluorescence Guided Procedure of Trunk Region using Pafolacianine, Percutaneous Endoscopic Approach

8E0W7EN Fluorescence Guided Procedure of Trunk Region using Pafolacianine, Via Natural or Artificial Opening

8E0W8EN Fluorescence Guided Procedure of Trunk Region using Pafolacianine, Via Natural or Artificial Opening Endoscopic

| | | | | |
|-----------------------|----------|---|--|---|
| <i>Section</i> | 8 | Other Procedures | | |
| <i>Body System</i> | E | Physiological Systems and Anatomical Regions | | |
| <i>Operation</i> | 0 | Other Procedures: Methodologies which attempt to remediate or cure a disorder or disease | | |
| <i>Body Region</i> | | <i>Approach</i> | <i>Method</i> | <i>Qualifier</i> |
| W Trunk Region | | 0 Open 3 Percutaneous 4 Percutaneous Endoscopic 7 Via Natural or Artificial Opening 8 Via Natural or Artificial Opening Endoscopic | E Fluorescence Guided Procedure | N Pafolacianine Z No Qualifier |

ICD-10-PCS Additions, Deletions, and Revisions

X05- New Technology/Nervous System/Destruction

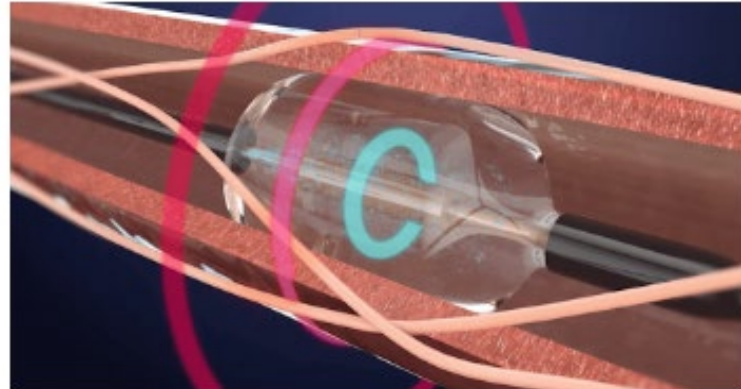
X051329 Destruction of Renal Sympathetic Nerve(s) using Ultrasound Ablation, Percutaneous Approach, New Technology Group 9

- Paradise™ Ultrasound Renal Denervation System

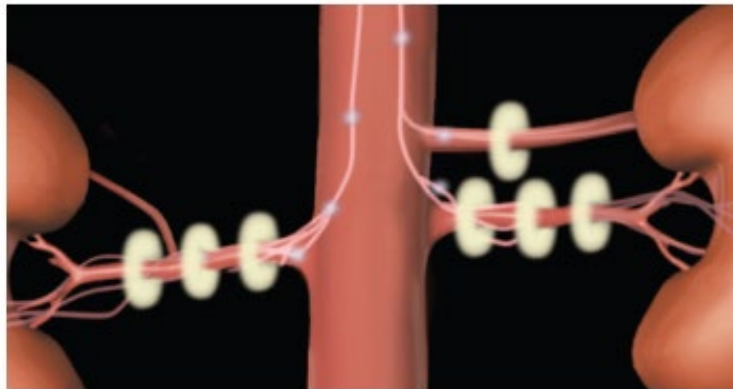
| | | | | |
|-------------------------------------|----------|---|--|---------------------------------|
| <i>Section</i> | X | New Technology | | |
| <i>Body System</i> | 0 | Nervous System | | |
| <i>Operation</i> | 5 | Destruction: Physical eradication of all or a portion of a body part by the direct use of energy, force, or a destructive agent | | |
| <i>Body Part</i> | | <i>Approach</i> | <i>Device / Substance / Technology</i> | <i>Qualifier</i> |
| 1 Renal Sympathetic Nerve(s) | | 3 Percutaneous | 2 Ultrasound Ablation | 9 New Technology Group 9 |

ICD-10-PCS Additions, Deletions, and Revisions

Paradise™ Ultrasound Renal Denervation System



The Paradise Renal Denervation Catheter within the artery. The red circle indicates the heat generated from the ultrasound energy in the tissue delivering energy within the artery. The blue circle indicates active cooling from circulating water within the artery to protect the artery from heat.



The white rings illustrate the heat deposited in the tissue, to decrease the over-activity of the nerves leading to the kidney. Each ring represents one 7-second treatment. Two to four treatments will be delivered to the left and right arteries supplying the kidney.

<https://www.youtube.com/watch?v=pNua5-cnxXi>

ICD-10-PCS Additions, Deletions, and Revisions

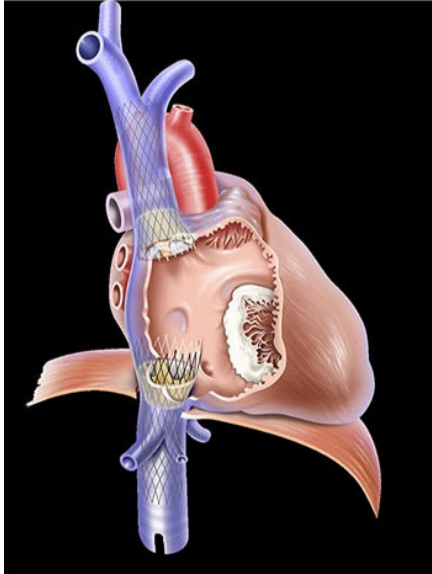
X2H- New Technology/Cardiovascular System/Insertion

- X2H03R9 Insertion of Intraluminal Device, Bioprosthetic Valve into Inferior Vena Cava, Percutaneous Approach, New Technology Group 9
- X2H13R9 Insertion of Intraluminal Device, Bioprosthetic Valve into Superior Vena Cava, Percutaneous Approach, New Technology Group 9
- X2H20R9 Insertion of Intraluminal Device, Bioprosthetic Valve into Right Femoral Vein, Open Approach, New Technology Group 9
- X2H30R9 Insertion of Intraluminal Device, Bioprosthetic Valve into Left Femoral Vein, Open Approach, New Technology Group 9

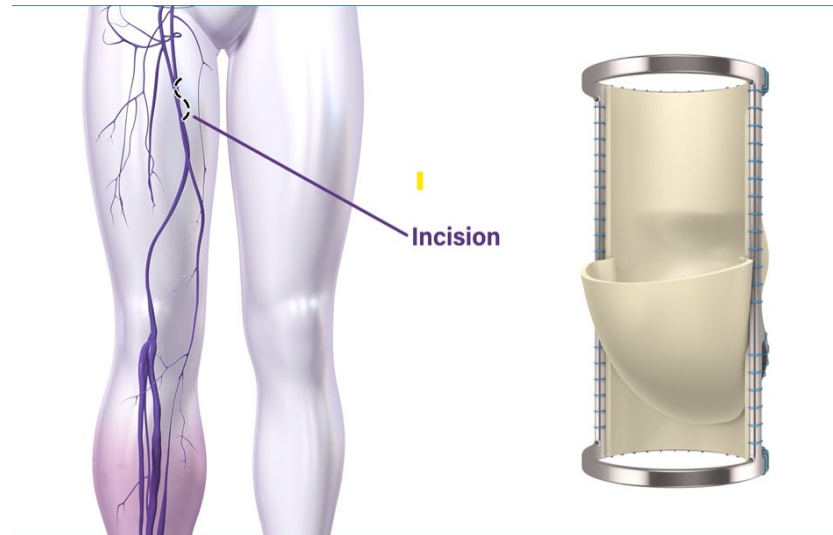
| | | | | |
|---|----------|--|---|---------------------------------|
| <i>Section</i> | X | New Technology | | |
| <i>Body System</i> | 2 | Cardiovascular System | | |
| <i>Operation</i> | H | Insertion: Putting in a nonbiological appliance that monitors, assists, performs, or prevents a physiological function but does not physically take the place of a body part | | |
| <i>Body Part</i> | | <i>Approach</i> | <i>Device / Substance / Technology</i> | <i>Qualifier</i> |
| 0 Inferior Vena Cava 1 Superior Vena Cava | | 3 Percutaneous | R Intraluminal Device, Bioprosthetic Valve | 9 New Technology Group 9 |
| 2 Femoral Vein, Right 3 Femoral Vein, Left | | 0 Open | R Intraluminal Device, Bioprosthetic Valve | 9 New Technology Group 9 |
| 6 Atrium, Right K Ventricle, Right | | 3 Percutaneous | V Intracardiac Pacemaker, Dual-Chamber | 9 New Technology Group 9 |
| L Axillary Artery, Right M Axillary Artery, Left X Thoracic Aorta, Ascending | | 0 Open | F Conduit to Short-term External Heart Assist System | 9 New Technology Group 9 |

ICD-10-PCS Additions, Deletions, and Revisions

TricValve® and VenoValve®



Two TricValve® bioprosthetic valves are placed in the venous system (one in the superior vena cava and another in the inferior vena cava) to reduce the backflow of blood and pressure on the other organs of the body.



The VenoValve® is surgically implanted into the femoral vein via a 5-to-6-inch incision in the upper thigh to prevent reflux of venous blood down the leg.

<https://venovalve.com/>

ICD-10-PCS Additions, Deletions, and Revisions

X2H- New Technology/Cardiovascular System/Insertion

X2HL0F9 Insertion of Conduit to Short-term External Heart Assist System into Right Axillary Artery, Open Approach, New Technology Group 9

X2HM0F9 Insertion of Conduit to Short-term External Heart Assist System into Left Axillary Artery, Open Approach, New Technology Group 9

X2HX0F9 Insertion of Conduit to Short-term External Heart Assist System into Thoracic Aorta, Ascending, Open Approach, New Technology Group 9

| | | | | |
|---|----------|--|---|---------------------------------|
| <i>Section</i> | X | New Technology | | |
| <i>Body System</i> | 2 | Cardiovascular System | | |
| <i>Operation</i> | H | Insertion: Putting in a nonbiological appliance that monitors, assists, performs, or prevents a physiological function but does not physically take the place of a body part | | |
| <i>Body Part</i> | | <i>Approach</i> | <i>Device / Substance / Technology</i> | <i>Qualifier</i> |
| 0 Inferior Vena Cava 1 Superior Vena Cava | | 3 Percutaneous | R Intraluminal Device, Bioprosthetic Valve | 9 New Technology Group 9 |
| 2 Femoral Vein, Right 3 Femoral Vein, Left | | 0 Open | R Intraluminal Device, Bioprosthetic Valve | 9 New Technology Group 9 |
| 6 Atrium, Right K Ventricle, Right | | 3 Percutaneous | V Intracardiac Pacemaker, Dual-Chamber | 9 New Technology Group 9 |
| L Axillary Artery, Right M Axillary Artery, Left X Thoracic Aorta, Ascending | | 0 Open | F Conduit to Short-term External Heart Assist System | 9 New Technology Group 9 |

May also see documented in the record as the Impella 5.5[®] with Smart Assist[®] system.

ICD-10-PCS Additions, Deletions, and Revisions

X2H- New Technology/Cardiovascular System/Insertion

For insertion of Impella pump (coded separately):

- Axillary arteries- Coded as percutaneous approach (02HA3RZ)
- Ascending aorta- Coded as open approach (02HA0RZ)
- Also, code 5A0221D Assistance with Cardiac Output using Impeller Pump, Continuous

Coding Clinic, 4th Quarter 2016, page 137

ICD-10-PCS Additions, Deletions, and Revisions

X2H- New Technology/Cardiovascular System/Insertion

X2H63V9 Insertion of Dual-Chamber Intracardiac Pacemaker into Right Atrium, Percutaneous Approach, New Technology Group 9

X2HK3V9 Insertion of Dual-Chamber Intracardiac Pacemaker into Right Ventricle, Percutaneous Approach, New Technology Group 9

- Aveir™ Leadless Pacemaker (LP) System by Abott

| | | | | |
|---|----------|--|---|---------------------------------|
| <i>Section</i> | X | New Technology | | |
| <i>Body System</i> | 2 | Cardiovascular System | | |
| <i>Operation</i> | H | Insertion: Putting in a nonbiological appliance that monitors, assists, performs, or prevents a physiological function but does not physically take the place of a body part | | |
| <i>Body Part</i> | | <i>Approach</i> | <i>Device / Substance / Technology</i> | <i>Qualifier</i> |
| 6 Atrium, Right K Ventricle, Right | | 3 Percutaneous | V Intracardiac Pacemaker, Dual-Chamber | 9 New Technology Group 9 |



ICD-10-PCS Additions, Deletions, and Revisions

X2H- New Technology/Cardiovascular System/Insertion

An existing right ventricular leadless pacemaker can be upgraded to become part of a dual-chamber leadless pacemaker pair. If upgrading to a dual-chamber pacing by implanting a leadless pacemaker into the atrium only, use only code X2H63V9 for the right atrium insertion.

For removal or revision of the leadless pacemaker, use codes 02PA3NZ or 02WA3NZ. No new codes were created for the removal or revision of the leadless pacemaker.

ICD-10-PCS Additions, Deletions, and Revisions

X2H- New Technology/Cardiovascular System/Bypass

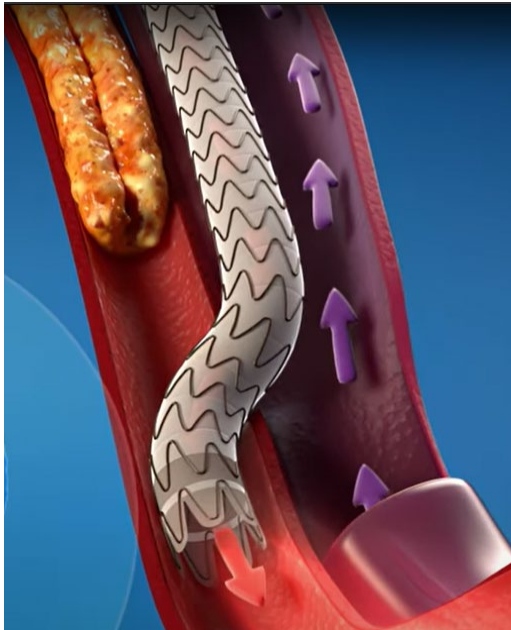
- X2KH3D9 Bypass Right Femoral Artery using Conduit through Femoral Vein to Superficial Femoral Artery, Percutaneous Approach, New Technology Group 9
- X2KH3E9 Bypass Right Femoral Artery using Conduit through Femoral Vein to Popliteal Artery, Percutaneous Approach, New Technology Group 9
- X2KJ3D9 Bypass Left Femoral Artery using Conduit through Femoral Vein to Superficial Femoral Artery, Percutaneous Approach, New Technology Group 9
- X2KJ3E9 Bypass Left Femoral Artery using Conduit through Femoral Vein to Popliteal Artery, Percutaneous Approach, New Technology Group 9

| | | | | |
|---|----------|--|--|---------------------------------|
| <i>Section</i> | X | New Technology | | |
| <i>Body System</i> | 2 | Cardiovascular System | | |
| <i>Operation</i> | H | Insertion: Putting in a nonbiological appliance that monitors, assists, performs, or prevents a physiological function but does not physically take the place of a body part | | |
| <i>Body Part</i> | | <i>Approach</i> | <i>Device / Substance / Technology</i> | <i>Qualifier</i> |
| H Femoral Artery, Right J Femoral Artery, Left | | 3 Percutaneous | D Conduit through Femoral Vein to Superficial Femoral Artery E Conduit through Femoral Vein to Popliteal Artery | 9 New Technology Group 9 |

ICD-10-PCS Additions, Deletions, and Revisions

DETOUR[®] System using TORUS[®] Stents

- DETOUR[®] System using TORUS[®] Stents (previously known as the PQ Bypass System)
- Common terms related to this procedure: PQ bypass, DETOUR[®] bypass, TORUS[®] stent placement, ENDOCROSS[®] device being used.



ICD-10-PCS Additions, Deletions, and Revisions

X2U- New Technology/Cardiovascular System/Supplement

X2U4079 Supplement Coronary Artery/Arteries with Vein Graft Extraluminal Support Device(s), Open Approach, New Technology Group 9

X2UQ0P9 Supplement Right Upper Extremity Vein with Synthetic Substitute, Extraluminal Support Device, Open Approach, New Technology Group 9

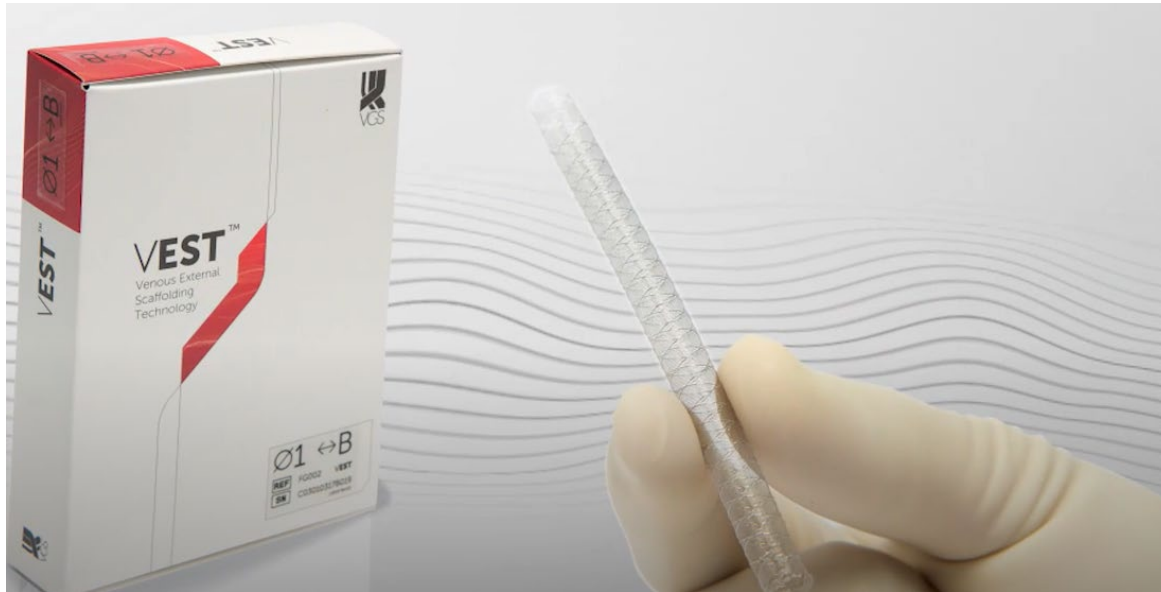
X2UR0P9 Supplement Left Upper Extremity Vein with Synthetic Substitute, Extraluminal Support Device, Open Approach, New Technology Group 9

| | | | | |
|---|----------|---|--|---------------------------------|
| <i>Section</i> | X | New Technology | | |
| <i>Body System</i> | 2 | Cardiovascular System | | |
| <i>Operation</i> | U | Supplement: Putting in or on biological or synthetic material that physically reinforces and/or augments the function of a portion of a body part | | |
| <i>Body Part</i> | | <i>Approach</i> | <i>Device / Substance / Technology</i> | <i>Qualifier</i> |
| 4 Coronary Artery/Arteries | | 0 Open | 7 Vein Graft Extraluminal Support Device(s) | 9 New Technology Group 9 |
| Q Upper Extremity Vein, Right R Upper Extremity Vein, Left | | 0 Open | P Synthetic Substitute, Extraluminal Support Device | 9 New Technology Group 9 |

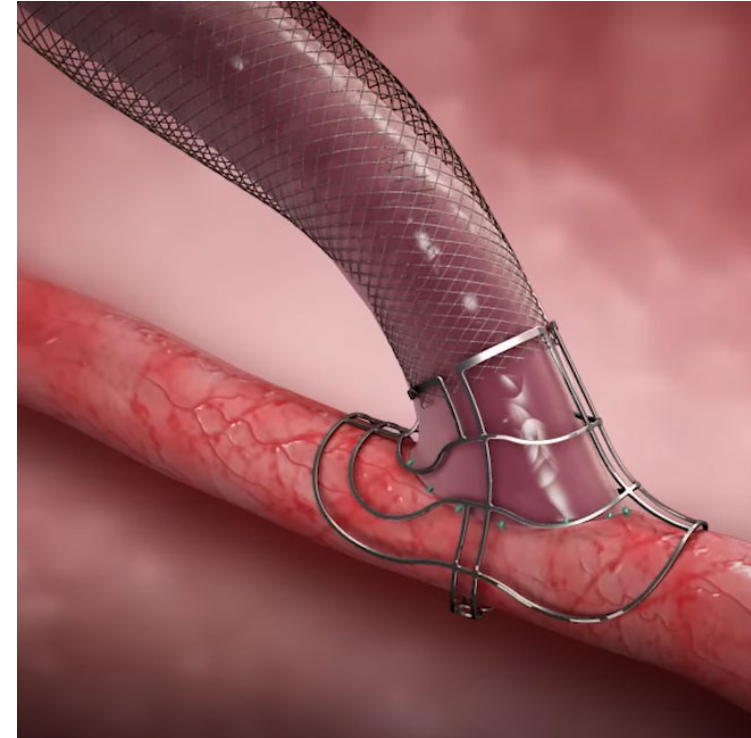
- VEST™ Venous External Support System and VASQ™ External Support Device

ICD-10-PCS Additions, Deletions, and Revisions

VEST™ Venous External Support System and VASQ™ External Support Device



VEST™ <https://www.youtube.com/watch?v=iK8xVzrSYJ8>



VASQ™ <https://www.youtube.com/watch?v=2W3HoTH2x58>

ICD-10-PC Additions, Deletions, and Revisions

XNH- New Technology/Bones/Insertion

XNHG0F9 Insertion of Tibial Extension with Motion Sensors into Right Tibia, Open Approach, New Technology Group 9

XNHH0F9 Insertion of Tibial Extension with Motion Sensors into Left Tibia, Open Approach, New Technology Group 9

| | | | |
|---|---|---|---------------------------------|
| <i>Section</i> | X New Technology | | |
| <i>Body System</i> | N Bones | | |
| <i>Operation</i> | H Insertion: Putting in a nonbiological appliance that monitors, assists, performs, or prevents a physiological function but does not physically take the place of a body part | | |
| <i>Body Part</i> | <i>Approach</i> | <i>Device / Substance / Technology</i> | <i>Qualifier</i> |
| G Tibia, Right H Tibia, Left | 0 Open | F Tibial Extension with Motion Sensors | 9 New Technology Group 9 |

- Canturio™ te (CTE) is the tibial extension implant
- Canary Health Implanted Reporting Processor (CHIRP™) is located inside the implant
- Tibial extension implant is only used with the cemented Zimmer Biomet Persona® Personalized Knee Replacement
- Combined, this unit is called Persona IQ® Smart Knee®

ICD-10-PC Additions, Deletions, and Revisions

XNH- New Technology/Bones/Insertion

Two codes are required to completely describe the Persona IQ® Smart Knee®: A code from the OSR table (Medical and Surgical, Lower Joints, Replacement) using qualifier value 9, Cemented and the XNH code (as listed on previous slide).

Common terms related to this procedure: Canary, CHIRP™, Canary tibial extension, CTE, Persona IQ smart knee, Persona knee with CTE

Persona® and Persona IQ®



ICD-10-PC Additions, Deletions, and Revisions

XNR- New Technology/Bones/Replacement

XNRL099 Replacement of Right Tarsal with Talar Prosthesis Synthetic Substitute, Open Approach, New Technology Group 9

XNRM099 Replacement of Left Tarsal with Talar Prosthesis Synthetic Substitute, Open Approach, New Technology Group 9

| | | | | |
|---|----------|---|--|---------------------------------|
| <i>Section</i> | X | New Technology | | |
| <i>Body System</i> | N | Bones | | |
| <i>Operation</i> | R | Replacement: Putting in or on biological or synthetic material that physically takes the place and/or function of all or a portion of a body part | | |
| <i>Body Part</i> | | <i>Approach</i> | <i>Device / Substance / Technology</i> | <i>Qualifier</i> |
| 8 Skull | | 0 Open | D Synthetic Substitute, Ultrasound Penetrable | 9 New Technology Group 9 |
| L Tarsal, Right M Tarsal, Left | | 0 Open | 9 Synthetic Substitute, Talar Prosthesis | 9 New Technology Group 9 |

- Code with ankle replacement code from OSR table.
- Total Ankle Talar Replacement (TATR)- 4WEB XL talus implant

ICD-10-PC Additions, Deletions, and Revisions

XNR- New Technology/Bones/Replacement

XNR80D9 Replacement of Skull with Ultrasound Penetrable Synthetic Substitute, Open Approach, New Technology Group 9

| | | | |
|---|--|--|---------------------------------|
| <i>Section</i> | X New Technology | | |
| <i>Body System</i> | N Bones | | |
| <i>Operation</i> | R Replacement: Putting in or on biological or synthetic material that physically takes the place and/or function of all or a portion of a body part | | |
| <i>Body Part</i> | <i>Approach</i> | <i>Device / Substance / Technology</i> | <i>Qualifier</i> |
| 8 Skull | 0 Open | D Synthetic Substitute, Ultrasound Penetrable | 9 New Technology Group 9 |
| L Tarsal, Right M Tarsal, Left | 0 Open | 9 Synthetic Substitute, Talar Prosthesis | 9 New Technology Group 9 |



- Longevity ClearFit® OTS (Off the Shelf)
- Code first for the definitive intracranial procedure that is performed.
- Code separately for any ultrasound performed.

ICD-10-PC Additions, Deletions, and Revisions

XRG- New Technology/Joints/Fusion

- XRGJ0B9 Fusion of Right Ankle Joint using Open-truss Design Internal Fixation Device, Open Approach, New Technology Group 9
- XRGK0B9 Fusion of Left Ankle Joint using Open-truss Design Internal Fixation Device, Open Approach, New Technology Group 9
- XRGL0B9 Fusion of Right Tarsal Joint using Open-truss Design Internal Fixation Device, Open Approach, New Technology Group 9
- XRGM0B9 Fusion of Left Tarsal Joint using Open-truss Design Internal Fixation Device, Open Approach, New Technology Group 9

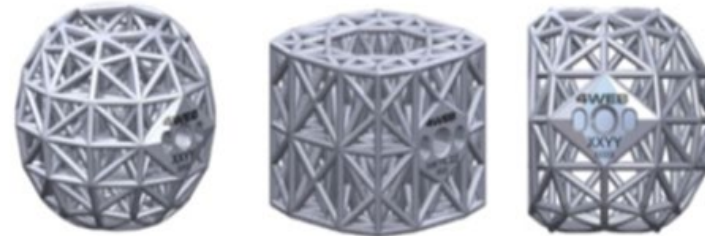
| | | | |
|--|---|--|---------------------------------|
| <i>Section</i> | X New Technology | | |
| <i>Body System</i> | R Joints | | |
| <i>Operation</i> | G Fusion: Joining together portions of an articular body part rendering the articular body part immobile | | |
| <i>Body Part</i> | <i>Approach</i> | <i>Device / Substance / Technology</i> | <i>Qualifier</i> |
| J Ankle Joint, Right K Ankle Joint, Left L Tarsal Joint, Right M Tarsal Joint, Left | 0 Open | B Internal Fixation Device, Open-truss Design | 9 New Technology Group 9 |

ICD-10-PC Additions, Deletions, and Revisions

XRG- New Technology/Joints/Fusion

- Open-Truss Ankle Fusion Device- 4WEB Ankle Truss System™ (ATS)
 - Orthosphere
 - Orthoblock
 - Orthosphere flat-sided

OrthoSphere™ OrthoBlock™ OrthoSphere™ flat-sided



- Two codes are required to completely describe the combination fusion of the tarsal joint and the ankle joint using the Open-Truss device and the intramedullary nail across both joints. Both codes are from the XRG table.

ICD-10-PC Additions, Deletions, and Revisions

XRG- New Technology/Joints/Fusion- Revisions

- XRGA0R7 Fusion of Thoracolumbar Vertebral Joint using **Custom-Made Anatomically Designed Interbody Fusion Device**, Open Approach, New Technology Group 7
- XRGA3R7 Fusion of Thoracolumbar Vertebral Joint using **Custom-Made Anatomically Designed Interbody Fusion Device**, Percutaneous Approach, New Technology Group 7
- XRGA4R7 Fusion of Thoracolumbar Vertebral Joint using **Custom-Made Anatomically Designed Interbody Fusion Device**, Percutaneous Endoscopic Approach, New Technology Group 7
- XRGB0R7 Fusion of Lumbar Vertebral Joint using **Custom-Made Anatomically Designed Interbody Fusion Device**, Open Approach, New Technology Group 7
- XRGB3R7 Fusion of Lumbar Vertebral Joint using **Custom-Made Anatomically Designed Interbody Fusion Device**, Percutaneous Approach, New Technology Group 7
- XRGB4R7 Fusion of Lumbar Vertebral Joint using **Custom-Made Anatomically Designed Interbody Fusion Device**, Percutaneous Endoscopic Approach, New Technology Group 7

| | | | | |
|---|----------|--|---|---------------------------------|
| <i>Section</i> | X | New Technology | | |
| <i>Body System</i> | R | Joints | | |
| <i>Operation</i> | G | Fusion: Joining together portions of an articular body part rendering the articular body part immobile | | |
| <i>Body Part</i> | | <i>Approach</i> | <i>Device / Substance / Technology</i> | <i>Qualifier</i> |
| A Thoracolumbar Vertebral Joint | | 0 Open | R Interbody Fusion Device, Custom-Made Anatomically Designed | 7 New Technology Group 7 |
| B Lumbar Vertebral Joint | | 3 Percutaneous | | |
| C Lumbar Vertebral Joints, 2 or more | | 4 Percutaneous Endoscopic | | |
| D Lumbosacral Joint | | | | |

ICD-10-PC Additions, Deletions, and Revisions

XRG- New Technology/Joints/Fusion- Revisions

- XRGC0R7 Fusion of 2 or more Lumbar Vertebral Joints using **Custom-Made Anatomically Designed Interbody Fusion Device**, Open Approach, New Technology Group 7
- XRGC3R7 Fusion of 2 or more Lumbar Vertebral Joints using **Custom-Made Anatomically Designed Interbody Fusion Device**, Percutaneous Approach, New Technology Group 7
- XRGC4R7 Fusion of 2 or more Lumbar Vertebral Joints using **Custom-Made Anatomically Designed Interbody Fusion Device**, Percutaneous Endoscopic Approach, New Technology Group 7
- XRGD0R7 Fusion of Lumbosacral Joint using **Custom-Made Anatomically Designed Interbody Fusion Device**, Open Approach, New Technology Group 7
- XRGD3R7 Fusion of Lumbosacral Joint using **Custom-Made Anatomically Designed Interbody Fusion Device**, Percutaneous Approach, New Technology Group 7
- XRGD4R7 Fusion of Lumbosacral Joint using **Custom-Made Anatomically Designed Interbody Fusion Device**, Percutaneous Endoscopic Approach, New Technology Group 7

| | | | |
|--|---|---|---------------------------------|
| <i>Section</i> | X New Technology | | |
| <i>Body System</i> | R Joints | | |
| <i>Operation</i> | G Fusion: Joining together portions of an articular body part rendering the articular body part immobile | | |
| <i>Body Part</i> | <i>Approach</i> | <i>Device / Substance / Technology</i> | <i>Qualifier</i> |
| A Thoracolumbar Vertebral Joint B Lumbar Vertebral Joint C Lumbar Vertebral Joints, 2 or more D Lumbosacral Joint | 0 Open 3 Percutaneous 4 Percutaneous Endoscopic | R Interbody Fusion Device, Custom-Made Anatomically Designed | 7 New Technology Group 7 |

ICD-10-PC Additions, Deletions, and Revisions

New Technology/Physiological Systems/Monitoring

XX20X89 Monitoring of Brain Electrical Activity, Computer-aided Detection and Notification, New Technology Group 9

XX2F3W9 Monitoring of Musculoskeletal Muscle Compartment Pressure, Micro-Electro-Mechanical System, Percutaneous Approach, New Technology Group 9

| | | | | |
|--------------------------|----------|--|---|---------------------------------|
| <i>Section</i> | X | New Technology | | |
| <i>Body System</i> | X | Physiological Systems | | |
| <i>Operation</i> | 2 | Monitoring: Determining the level of a physiological or physical function repetitively over a period of time | | |
| <i>Body Part</i> | | <i>Approach</i> | <i>Device / Substance / Technology</i> | <i>Qualifier</i> |
| 0 Central Nervous | | X External | 8 Brain Electrical Activity, Computer-aided Detection and Notification | 9 New Technology Group 9 |
| F Musculoskeletal | | 3 Percutaneous | W Muscle Compartment Pressure, Micro-Electro-Mechanical System | 9 New Technology Group 9 |

- Ceribell® Electrical Activity Monitor
- MY01 Compartment Monitor

ICD-10-PC Additions, Deletions, and Revisions

XXE- New Technology/Physiological Systems/Measurement

XXE2X19 Measurement of Cardiac Output, Computer-aided Assessment, New Technology Group 9

| | | | | |
|--------------------|----------|---|--|---------------------------------|
| <i>Section</i> | X | New Technology | | |
| <i>Body System</i> | X | Physiological Systems | | |
| <i>Operation</i> | E | Measurement: Determining the level of a physiological or physical function at a point in time | | |
| <i>Body Part</i> | | <i>Approach</i> | <i>Device / Substance / Technology</i> | <i>Qualifier</i> |
| 2 Cardiac | | X External | 1 Output, Computer-aided Assessment | 9 New Technology Group 9 |

- EchoGo Heart Failure 1.0
- Code the echocardiography separately

ICD-10-PC Additions, Deletions, and Revisions

XXE- New Technology/Physiological Systems/Measurement

XXE5XY9 Measurement of Infection, Other Positive Blood/Isolated Colonies Bimodal Phenotypic Susceptibility Technology, New Technology Group 9

| | | | | |
|----------------------|----------|---|---|---------------------------------|
| <i>Section</i> | X | New Technology | | |
| <i>Body System</i> | X | Physiological Systems | | |
| <i>Operation</i> | E | Measurement: Determining the level of a physiological or physical function at a point in time | | |
| <i>Body Part</i> | | <i>Approach</i> | <i>Device / Substance / Technology</i> | <i>Qualifier</i> |
| 5 Circulatory | | X External | Y Infection, Other Positive Blood/Isolated Colonies Bimodal Phenotypic Susceptibility Technology | 9 New Technology Group 9 |

- Selux Rapid AST Platform

ICD-10-PC Additions, Deletions, and Revisions

Deleted Codes

| Deleted Code | Code Description | New Coding |
|--------------|---|---|
| XV508A4 | Destruction of Prostate using Robotic Waterjet Ablation, Via Natural or Artificial Opening Endoscopic, New Technology Group 4 (Aquabeam System for Aquablation) | Code as OV508ZZ, Destruction of Prostate, Via Natural or Artificial Opening Endoscopic |
| XW033G4 | Introduction of Plazomicin Anti-infective into Peripheral Vein, Percutaneous Approach, New Technology Group 4 (ZEMDRI™) | Code as 3E03329, Introduction of Other Anti-infective into Peripheral Vein, Percutaneous Approach |
| XW033H4 | Introduction of Synthetic Human Angiotensin II into Peripheral Vein, Percutaneous Approach, New Technology Group 4 (GIAPREZA™) | Code as 3E033XZ, Introduction of Vasopressor into Peripheral Vein, Percutaneous Approach |
| XW043G4 | Introduction of Plazomicin Anti-infective into Central Vein, Percutaneous Approach, New Technology Group 4 (ZEMDRI™) | Code 3E04329, Introduction of Other Anti-infective into Central Vein, Percutaneous Approach |
| XW043H4 | Introduction of Synthetic Human Angiotensin II into Central Vein, Percutaneous Approach, New Technology Group 4 (GIAPREZA™) | Code as 3E043XZ, Introduction of Vasopressor into Central Vein, Percutaneous Approach |

ICD-10-PC Additions, Deletions, and Revisions

XW0- New Technology/Anatomical Regions/Introduction

XW013L9 Introduction of Elranatamab Antineoplastic into Subcutaneous Tissue, Percutaneous Approach, New Technology Group 9

XW013S9 Introduction of Epcoritamab Monoclonal Antibody into Subcutaneous Tissue, Percutaneous Approach, New Technology Group 9 (Epkinly™)

| | | | | |
|------------------------------|----------|--|--|---------------------------------|
| <i>Section</i> | X | New Technology | | |
| <i>Body System</i> | W | Anatomical Regions | | |
| <i>Operation</i> | 0 | Introduction: Putting in or on a therapeutic, diagnostic, nutritional, physiological, or prophylactic substance except blood or blood products | | |
| <i>Body Part</i> | | <i>Approach</i> | <i>Device / Substance / Technology</i> | <i>Qualifier</i> |
| 1 Subcutaneous Tissue | | 3 Percutaneous | L Elranatamab Antineoplastic | 9 New Technology Group 9 |
| 1 Subcutaneous Tissue | | 3 Percutaneous | S COVID-19 Vaccine Dose 1 | 6 New Technology Group 6 |

ICD-10-PC Additions, Deletions, and Revisions

XW0- New Technology/Anatomical Regions/Introduction- Revisions

XW00X27 Introduction of **Anacaulase-bcdb** into Skin, External Approach, New Technology Group 7

XW01X27 Introduction of **Anacaulase-bcdb** into Subcutaneous Tissue, External Approach, New Technology Group 7

ICD-10-PC Additions, Deletions, and Revisions

XW0- New Technology/Anatomical Regions/Introduction

XW033K9 Introduction of Sulbactam-Durlobactam into Peripheral Vein, Percutaneous Approach, New Technology Group 9 (Xacduro)

XW043K9 Introduction of Sulbactam-Durlobactam into Central Vein, Percutaneous Approach, New Technology Group 9 (Xacduro)

| | | | | |
|--------------------------|----------|--|--|---------------------------------|
| <i>Section</i> | X | New Technology | | |
| <i>Body System</i> | W | Anatomical Regions | | |
| <i>Operation</i> | 0 | Introduction: Putting in or on a therapeutic, diagnostic, nutritional, physiological, or prophylactic substance except blood or blood products | | |
| <i>Body Part</i> | | <i>Approach</i> | <i>Device / Substance / Technology</i> | <i>Qualifier</i> |
| 3 Peripheral Vein | | 3 Percutaneous | K Sulbactam-Durlobactam | 9 New Technology Group 9 |
| 4 Central Vein | | 3 Percutaneous | K Sulbactam-Durlobactam | 9 New Technology Group 9 |

ICD-10-PC Additions, Deletions, and Revisions

XW0- New Technology/Anatomical Regions/Introduction

XW033Q9 Introduction of Posoleucel into Peripheral Vein, Percutaneous Approach, New Technology Group 9 (Viraly-m)

XW043Q9 Introduction of Posoleucel into Central Vein, Percutaneous Approach, New Technology Group 9 (Viraly-m)

| | | | | |
|--------------------------|----------|--|--|---------------------------------|
| <i>Section</i> | X | New Technology | | |
| <i>Body System</i> | W | Anatomical Regions | | |
| <i>Operation</i> | 0 | Introduction: Putting in or on a therapeutic, diagnostic, nutritional, physiological, or prophylactic substance except blood or blood products | | |
| <i>Body Part</i> | | <i>Approach</i> | <i>Device / Substance / Technology</i> | <i>Qualifier</i> |
| 3 Peripheral Vein | | 3 Percutaneous | Q Posoleucel R Rezafungin | 9 New Technology Group 9 |
| 4 Central Vein | | 3 Percutaneous | Q Posoleucel R Rezafungin | 9 New Technology Group 9 |

ICD-10-PCS Additions, Deletions, and Revisions

XW0- New Technology/Anatomical Regions/Introduction

XW033P9 Introduction of Glofitamab Antineoplastic into Peripheral Vein, Percutaneous Approach, New Technology Group 9 (Columvi®)

XW043P9 Introduction of Glofitamab Antineoplastic into Central Vein, Percutaneous Approach, New Technology Group 9 (Columvi®)

| | | | | |
|--------------------------|----------|--|--|---------------------------------|
| <i>Section</i> | X | New Technology | | |
| <i>Body System</i> | W | Anatomical Regions | | |
| <i>Operation</i> | 0 | Introduction: Putting in or on a therapeutic, diagnostic, nutritional, physiological, or prophylactic substance except blood or blood products | | |
| <i>Body Part</i> | | <i>Approach</i> | <i>Device / Substance / Technology</i> | <i>Qualifier</i> |
| 3 Peripheral Vein | | 3 Percutaneous | P Glofitamab Antineoplastic | 9 New Technology Group 9 |
| 4 Central Vein | | 3 Percutaneous | P Glofitamab Antineoplastic | 9 New Technology Group 9 |

ICD-10-PC Additions, Deletions, and Revisions

New Technology/Anatomical Regions/Introduction

XW053T9 Introduction of Melphalan Hydrochloride Antineoplastic into Peripheral Artery, Percutaneous Approach, New Technology Group 9 (Hepzato™ Kit)

- Code also 5A1C00X for the filtration. No additional surgical code is assigned.

XW0DXJ9 Introduction of Quizartinib Antineoplastic into Mouth and Pharynx, External Approach, New Technology Group 9 (Vanflyta®)

| | | | | |
|----------------------------|----------|--|---|---------------------------------|
| <i>Section</i> | X | New Technology | | |
| <i>Body System</i> | W | Anatomical Regions | | |
| <i>Operation</i> | 0 | Introduction: Putting in or on a therapeutic, diagnostic, nutritional, physiological, or prophylactic substance except blood or blood products | | |
| <i>Body Part</i> | | <i>Approach</i> | <i>Device / Substance / Technology</i> | <i>Qualifier</i> |
| 5 Peripheral Artery | | 3 Percutaneous | T Melphalan Hydrochloride Antineoplastic | 9 New Technology Group 9 |
| D Mouth and Pharynx | | X External | J Quizartinib Antineoplastic | 9 New Technology Group 9 |

ICD-10-PC Additions, Deletions, and Revisions

XW0- New Technology/Anatomical Regions/Introduction

XW0DXN9 Introduction of SER-109 into Mouth and Pharynx, External Approach, New Technology Group 9 (Vowst™)

| | | | | |
|----------------------------|----------|--|--|---------------------------------|
| <i>Section</i> | X | New Technology | | |
| <i>Body System</i> | W | Anatomical Regions | | |
| <i>Operation</i> | 0 | Introduction: Putting in or on a therapeutic, diagnostic, nutritional, physiological, or prophylactic substance except blood or blood products | | |
| <i>Body Part</i> | | <i>Approach</i> | <i>Device / Substance / Technology</i> | <i>Qualifier</i> |
| D Mouth and Pharynx | | X External | N SER-109 | 9 New Technology Group 9 |

ICD-10-PCS Additions, Deletions, and Revisions

XW1- New Technology/Anatomical Regions/Transfusion

XW133H9 Transfusion of Lovotibeglogene Autotemcel into Peripheral Vein, Percutaneous Approach, New Technology Group 9 (Lovo-Cel)

XW143H9 Transfusion of Lovotibeglogene Autotemcel into Central Vein, Percutaneous Approach, New Technology Group 9 (Lovo-Cel)

| | | | | |
|--------------------------|----------|---|--|---------------------------------|
| <i>Section</i> | X | New Technology | | |
| <i>Body System</i> | W | Anatomical Regions | | |
| <i>Operation</i> | 1 | Transfusion: Putting in blood or blood products | | |
| <i>Body Part</i> | | <i>Approach</i> | <i>Device / Substance / Technology</i> | <i>Qualifier</i> |
| 3 Peripheral Vein | | 3 Percutaneous | H Lovotibeglogene Autotemcel | 9 New Technology Group 9 |
| 4 Central Vein | | 3 Percutaneous | H Lovotibeglogene Autotemcel | 9 New Technology Group 9 |

ICD-10-PC Additions, Deletions, and Revisions

XW0- New Technology/Anatomical Regions/Introduction

XW043R9 Introduction of Rezafungin into Central Vein, Percutaneous Approach, New Technology Group 9 (Rezzayo™)

| | | | | |
|-----------------------|----------|--|--|---------------------------------|
| <i>Section</i> | X | New Technology | | |
| <i>Body System</i> | W | Anatomical Regions | | |
| <i>Operation</i> | 0 | Introduction: Putting in or on a therapeutic, diagnostic, nutritional, physiological, or prophylactic substance except blood or blood products | | |
| <i>Body Part</i> | | <i>Approach</i> | <i>Device / Substance / Technology</i> | <i>Qualifier</i> |
| 4 Central Vein | | 3 Percutaneous | Q Posoleucel R Rezafungin | 9 New Technology Group 9 |

ICD-10-PCS Guideline Updates

ICD-10-PCS Guideline Updates

Guideline B5.2b

Percutaneous endoscopic approach with hand-assistance or extension of incision

B5.2b

Procedures performed using the percutaneous endoscopic approach with hand-assistance, or with an incision or extension of an incision to assist in the removal of all or a portion of a body part, or to anastomose a tubular body part with or without the temporary exteriorization of a body structure, are coded to the approach value Percutaneous Endoscopic.

Examples: Hand-assisted laparoscopic sigmoid colon resection with exteriorization of a segment of the colon for removal of specimen with return of colon back into abdominal cavity is coded to the approach value percutaneous endoscopic.

Laparoscopic sigmoid colectomy with extension of stapling port for removal of specimen and direct anastomosis is coded to the approach value percutaneous endoscopic.

Laparoscopic nephrectomy with midline incision for removing the resected kidney is coded to the approach value percutaneous endoscopic.

Robotic-assisted laparoscopic prostatectomy with extension of incision for removal of the resected prostate is coded to the approach value percutaneous endoscopic.

It does not matter how the body part exits the body. The approach value is determined by how the body part is disconnected.

ICD-10-PCS Guideline Updates

Guideline B6.1a

General guidelines

B6.1a

A device is coded only if a device remains after the procedure is completed. If no device remains, the device value No Device is coded. In limited root operations, the classification provides the qualifier values Temporary and Intraoperative, for specific procedures involving clinically significant devices, where the purpose of the device is to be utilized for a brief duration during the procedure or current inpatient stay. If a device that is intended to remain after the procedure is completed requires removal before the end of the operative episode in which it was inserted, **both** the insertion and removal of the device should be coded.

Text that was removed in the updated guidelines:

"...For example, the device size is inadequate, or an event documented as a complication occurs..."

Resources

2024 ICD-10-PCS Coding. Centers for Medicare & Medicaid Services. <https://www.cms.gov/medicare/coding-billing/icd-10-codes/2024-icd-10-pcs>

Aortix™. Procyrion. <https://www.procyrion.com/>

Cook Medical Introduces Flourish Pediatric Esophageal Atresia Device in US. NS Medical Devices. <https://www.nsmedicaldevices.com/news/cook-medical-flourish-pediatric/>

FY 2024 Code Updates: CM & PCS. Libman Education. <https://libmaneducation.com/>

Paradise™ Ultrasound Denervation System. Recor Medical. <https://www.recormedical.com/our-technology/>





Questions?

Q&A Document can be found on
[Healthcatalyst.com](https://www.healthcatalyst.com) under Resources/Webinars